

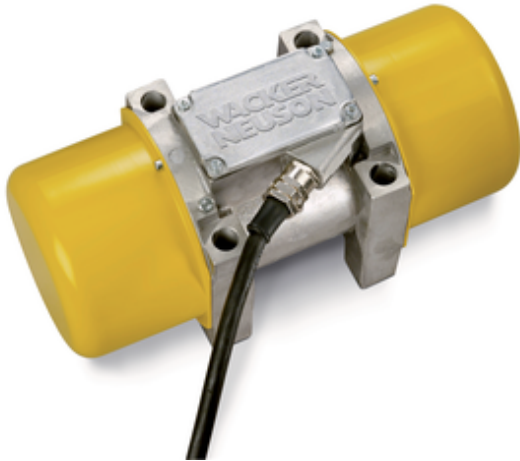


**WACKER
NEUSON**
all it takes!

External vibrator AR64/3/400

5100004210

[Home](#) >> [Catalog](#) >> [Products](#) >> [Concrete Technology](#) >> [External Vibrators](#) >> [Loosening, separating, transporting](#) >> [External vibrator AR64/3/400](#)



External vibrator AR64/3/400

Material number 5100004210

External vibrator, line of products 6, type of fastening 4, 3,000 revolutions per minute.

Product details

- Flange fastening to be screwed on
- RPM-stable, powerful electric motor designed, developed and produced in-house - Made in Germany

Comes with

- External vibrator
 - Operator's manual
- (Power cable not included in standard package)

Technical specifications

External vibrator AR64/3/400

ELECTRICAL - OUTPUT DETAILS

Nominal current	1,70 A
Nominal voltage	400 V
Nominal frequency	50 Hz
Nominal power [P]	0,90 kW
Phase	3 ~

ELECTRICAL SYSTEM

Breaker Switch On/Off	no
Operating indicator	No
Adjusting frequency	No
Integrated transformer	No

MOTOR

Motor type	asynchronous motor
------------	--------------------

ENVIRONMENT DATA

Sound level LpA	76,0 dB(A)
Sound level LpA (Standard)	DIN EN ISO 11201
Storage temperature range	-30 - 70 °C
Operating temperature range	-10 - 50 °C
Degree of protection	IP65

Protection class	I / Protective earthing
Temperature of body surface	80 °C

MECHANICAL - OUTPUT DETAILS

Centrifugal force	9,270 kN
Centrifugal force max.	16,050 kN
Vibrations	3.000 1/min
Vibrations (Hz)	50,0 Hz

MECHANICAL DETAILS

Length	352 mm
Width	155 mm
Height	188 mm
Weight	18,69 kg
Unbalanced mass/side pos1	18
Unbalanced mass/side pos2	9

ELECTRICAL - OUTPUT DETAILS

Nominal current	1,70 A
Nominal voltage	400 V
Nominal frequency	50 Hz
Nominal power [P]	0,90 kW
Phase	3 ~

ENVIRONMENT DATA

Sound level LpA	76,0 dB(A)
Sound level LpA (Standard)	DIN EN ISO 11201
Storage temperature range	-22 - 158 °F
Operating temperature range	14 - 122 °F
Degree of protection	IP65
Protection class	I / Protective earthing
Temperature of body surface	176,0 °F

MECHANICAL DETAILS

Length	13,9 "
Width	6,1 "
Height	7,4 "
Weight	41,20 lb
Unbalanced mass/side pos1	18
Unbalanced mass/side pos2	9

MECHANICAL - OUTPUT DETAILS

Centrifugal force	2.084 lbf
Centrifugal force max.	3.608,18 lbf
Vibrations	3.000 1/min
Vibrations (Hz)	50,0 Hz

MOTOR

Motor type	asynchronous motor
------------	--------------------

ELECTRICAL SYSTEM

Breaker Switch On/Off	no
Operating indicator	No
Adjusting frequency	No
Integrated transformer	No

Custom Attributes

Model serie	AR64
-------------	------

Please Note

This product availability can vary from country to country. It is possible that information / products may not be available in your country. More detailed information on engine power can be found in the operator's manual; the started power may vary due to specific operating conditions. Subject to alterations and errors expected. Applicable also to illustrations.

Copyright © 2023 Wacker Neuson SE